



SKYWAY



skyway 4



skyway 6



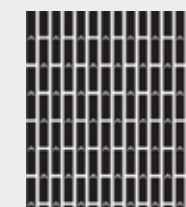
skyway 4



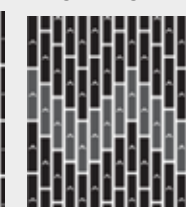
skyway 6

construction : multi-level loop
 fiber : 100% pp
 pile height : 4.0±0.5 mm
 total thickness : 6,3±0.5mm
 pile weight : 680 gr/m2
 total weight : 3430 gr/m2
 tile size : 25x100 cm
 backing : bitumen

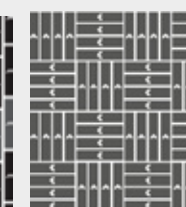
ASHLAR



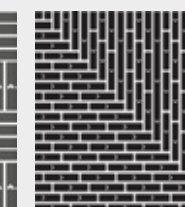
SEMI ASHLAR



QUARTER TURN



HERRINGBONE



RANDOM

